

## YOU ARE ALWAYS WELCOME

We are known for our hospitality and specialize in being a friendly resort. Forget the worries of your work-a-day world! Become a part of the natural, friendly tension-free atmosphere that is the magic of Edgewater Resort. Here's what our guests say after their stay:

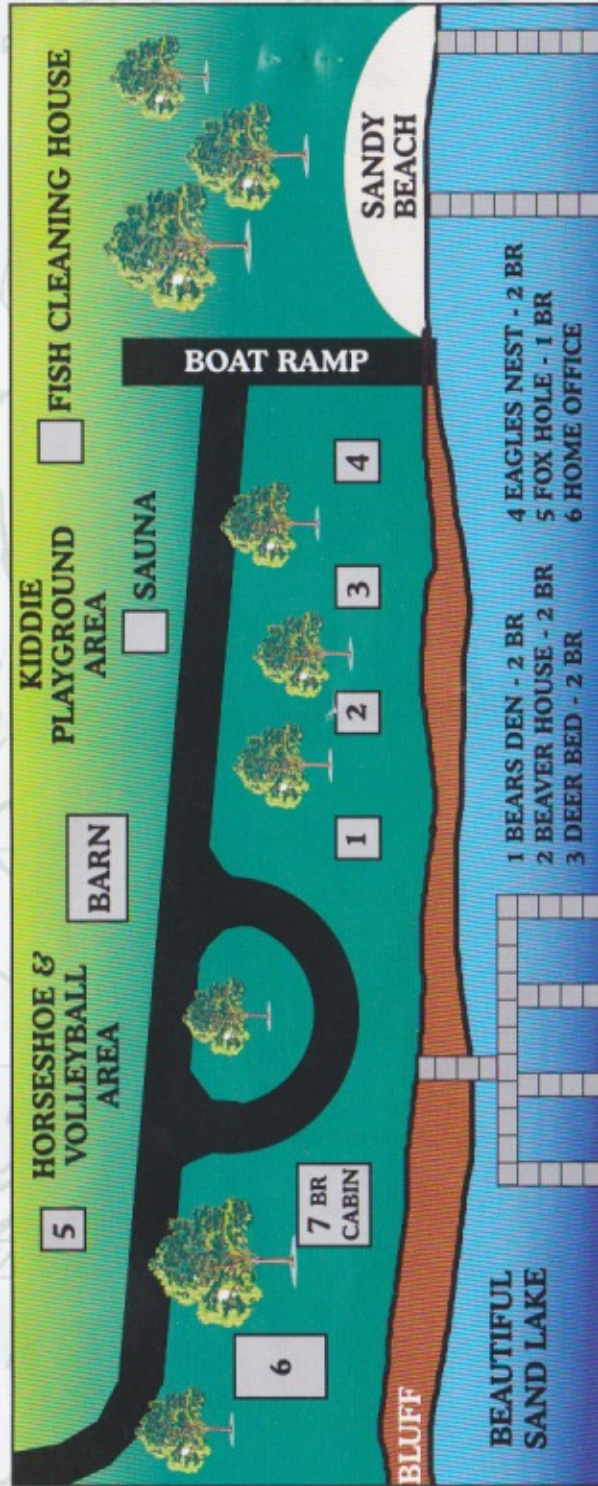
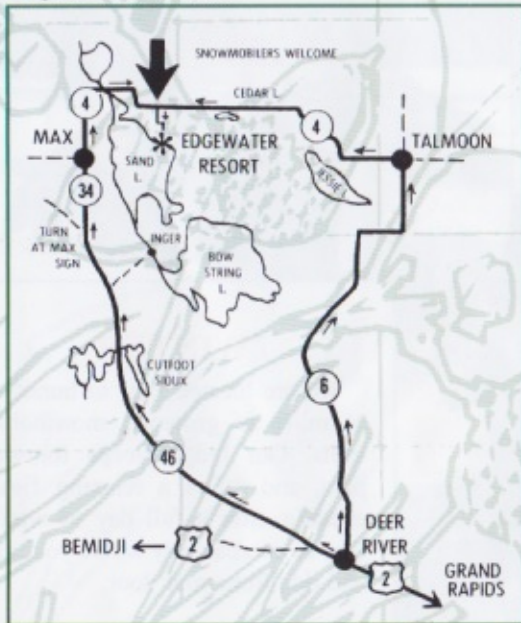
*"Dear Tom & Lori,*

*Thank you for providing such an enjoyable place for us to come and relax for a week. Your hospitality and helpfulness were very much appreciated. Us girls especially appreciated the cleanliness of the cabin - we were quite impressed! We loved your way of decorating also - everything matched and was very homey. We knew there was an extra touch added there. Thank you again for all you did to make our week special."*

Randy & Jean  
Doug & Debbie  
Craig & Joanne

## HERE'S THE WAY TO EDGEWATER

It is an easy four hour drive from Minneapolis or St. Paul via U.S. Highways 65, 35 or 169. Those of you coming from the east will find U.S. Highway 2 from Duluth the best route to Deer River. From there take Highway 46 or 6, approximately 32 miles to Edgewater either route.



# EDGEWATER RESORT & RV PARK



ON SAND LAKE

Your Hosts  
Tom and Lori Bosiger

52001 Edgewater Road  
Spring Lake, MN 56680

218-659-2620



All of our cabins are completely winterized for your year round enjoyment.

All are equipped with indoor plumbing, showers, and complete kitchens with utensils, stoves and refrigerators; one full size bed per bedroom and all bedding provided.

For that up North cabin-in-the-woods feeling, our one and two bedroom cabins have hardwood floors and knotty ash interior. For additional sleeping accommodations they also have a log-style futon couch.

Our 3400 square foot large group cabin has two stories. The main floor offers its large recreation room, with old-time bar, fire-place, 14 x 20 kitchen, main floor bathroom and shower rooms, card tables and more...The upstairs offers 7 large bedrooms and a bathroom.

All cabins have their own picnic table, lawn chairs, BBQ grill and fire pit. We also offer sauna, volleyball, horseshoes, playground with swings and slides, paddleboat, canoe, boat ramp, sandy beach, fishing and pontoon boat rental.

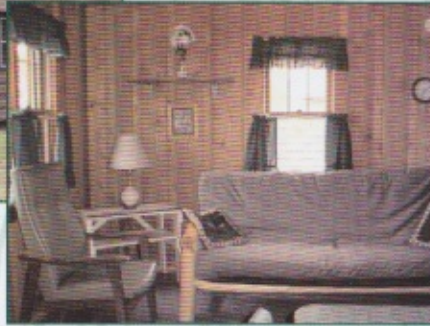
## SPRING

We, at EDGEWATER, feel that Spring is one of the best times of the year to visit. Why, just smelling the fresh forest air or seeing the young forest offspring is almost a guarantee to shake those old cold WINTER blues. (Not to mention, fishing is at its best).



## SUMMER

Cool summer mornings and late evening sunsets are the best time to FISH. Midday offers swimming, water skiing or just sunbathing on our private beach.



## WHAT TO BRING

Boat cushions, life jackets, fishing gear, towels, fans and personal items.

We are located in the heart of the CHIPPEWA NATIONAL FOREST on the well known BOWSTRING CHAIN OF LAKES on SAND LAKE. SAND LAKE is eight miles long and four miles wide. It holds an abundance of fish: Walleye, Northern, Large & Small Mouth Bass, Jumbo Perch, Crappies and Pan Fish.

**COME  
JOIN  
US!!**



## FALL

HUNT, FISH, HIKE or just relax as the CHIPPEWA NATIONAL FOREST burst into color.



## WINTER

We are located next to hundreds of miles of groomed snowmobile trails. Our lodge sleeps fourteen plus, and offers a relaxing firelit evening after a full day of winter fun, so you can stay where you play and ride from your door.